

Condo Gardens Brussels



**Jollystraat 141
1030 Schaarbeek**

+32 (0) 473 82 50 12

**ba@be-housing.be
www.be-housing.be**



**YOUR HOME
AWAY FROM HOME**



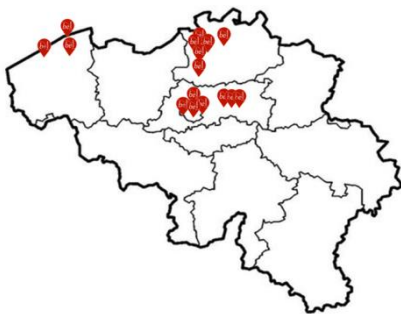
YOUR HOME AWAY FROM HOME

The Be-Housing Concept

Active on the Belgian housing market since 1984. We would like to receive you as our guest and welcome you warmly in **'your home away from home'**; a comfortable flat, room, or apartment, we spoil you with sincere hospitality.



A stay with us guarantees competitive priced units that are clean, spacious and comfortable, combined with the service of our attentive staff.



Throughout the years we kept growing, and today we can offer our clients more than 800 flats, rooms and apartments, scattered all over Belgium.

Leuven, Brussels, Antwerp, Ostend, Bruges, Blankenberge, and Mechelen as well, are cities in which we can offer you a solution for your short or long stay.

We are already pleased to be able to convince you of our qualities.

Our mission



'Give our guests a homey feel'.

Together with you, our team will look for a type of flat that will suit your needs regarding equipment and price. We greatly value customer satisfaction.

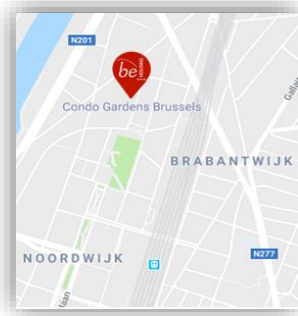
Not an impersonal hotel room, but your own spot. You can decide yourself how your room furnishing will look like. To be able to meet our clients wishes to the fullest extent, we offer our guests a wealth of possibilities.



**YOUR HOME
AWAY FROM HOME**

Condo Gardens Brussels

Condo Gardens Brussels is not just like any other buildings in Brussels. There are a lot of advantages which makes this residence unique and loved by our guests.



Location

One of the main reasons why people choose for Condo Gardens is because of the ideal location of this residence. Not only are there several bars, restaurants and shopping facilities nearby, but it is only 5 minutes away from the train and bus station. So it is easy to get where you need to be. And for those visiting the European Parliament, there is even better news. Because it's located less than 15 away by car.

Patio with barbeque

No matter if you're staying for a long holiday or for work reasons, there always needs to be time to relax! And there's no better way to do this, than in a deckchair at the residence's patio with a drink in your hand. There's also a barbecue to enjoy the sunny days. So you bring the meat and we'll bring the comfort!



Laundry Services

It's never easy when you're away from home and still need to be looking for a place to go and wash your clothes. Therefore Condo Gardens Brussels provides a washing machine and dryer. This way you can wash and dry your clothes without having to leave the building.



YOUR HOME
AWAY FROM HOME

How to improve your stay?

It has always been our goal to make sure that our guests feel at home. That is why there are now several options available, which you can choose from and will improve your comfort:

Bring your pet

How could you feel at home without bringing your best friend in the world? That would be impossible! Therefore we give you the option to bring your pet with you during your stay. Price: € 50/month



Park your car

Do you need a car to go to work? Or just to explore the city? Well just bring your car along! Because here at Condo Gardens Brussels we can provide you with a parking spot. Price: € 120/month

Lay back and still keep it clean

Have you always hoped someone would just come to your home and would do all the cleaning for you? Well stop dreaming! At Condo Gardens Brussels you can now hire someone to clean your room at a weekly base. Price: € 100/month



Starter package bed linen

4 Towels, a cushion, a Duvet with cover, a fitted sheet, a pillow, 2 kitchen towels, a bath mat, a piece of soap and a dishwashing product. Buy it all in one package and save yourself from the backache you would get from carrying all this with you during your travel. Price: € 100 (some products can also be bought separately)

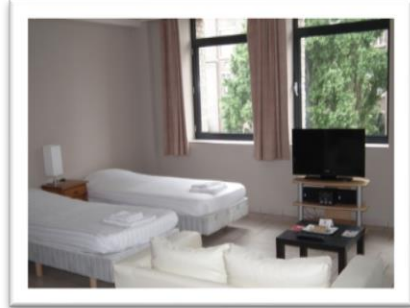
Starter package tableware

Tableware and cutlery for 4 persons, pots and pans, a pot ladle, a can opener, Scissors and a few glasses. Why buy your kitchenware somewhere else, when you can get it all at once without leaving the building! Price: € 65 (some products can also be bought separately)



YOUR HOME
AWAY FROM HOME

Available Flat Types

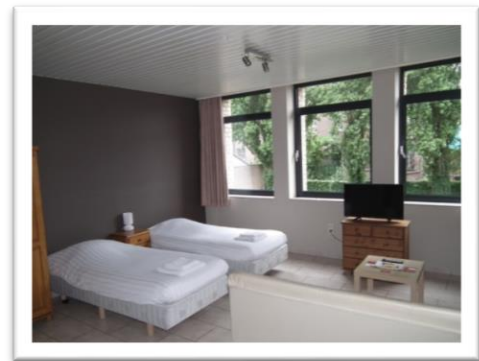


Studio Twin

These studios have a size of approximately 25 square metres. In all flats of this type, the bed, living area and kitchenette are located in the same space. They provide a separate bathroom with shower and toilet. The studios have a maximum capacity of 2 persons and contain a sofa and dining table with chairs.

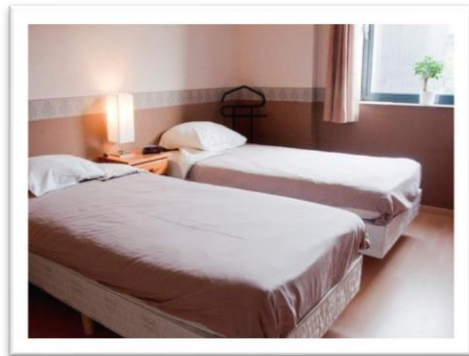
Large Studio

This type of room is more spacious and has a size of approximately 35 square metres. The bed, living area and kitchenette are located in the same space. You will also find a separate bathroom with shower and toilet. The large studio has a standard maximum capacity of 2 persons. It is however possible, at an extra charge, to stay in these studios with a third person.



One Bedroom Apartement

The 'one bedroom apartment' distinguishes itself from the others because of the separate bedroom. They are also more spacious and offer a useful living space with a size of approximately 45 square metres. The living area and kitchenette are located in the same space. You will find a separate bathroom with shower and toilet. These apartments have a maximum capacity of 2 persons. It is however possible, at an extra charge, to stay in these studios with a third person.



Prices

	Studio Twin	Large Studio Twin	One Bedroom Apartment
Rent per month	€ 740	€ 770	€ 800

Monthly costs			
Advance on energy use	€ 40	€ 40	€ 40
Advance on water consumption	€ 20	€ 20	€ 20
Maintenance common services	€ 40	€ 40	€ 40
Internet	€ 15	€ 15	€ 15
Television	€ 15	€ 15	€ 15
Dispose of the household waste	€ 15	€ 15	€ 15
Taxes first resident	€ 25	€ 25	€ 25

Total cost per month	€ 910	€ 940	€ 970
-----------------------------	--------------	--------------	--------------

- **Discount of € 50 per month, when booking for 1 year!**

One-time fixed costs

Administration fees:	€ 65
Final Cleaning:	€ 65

Deposit

€ 1400

Deposit will be refunded at the end of the stay after the rooms have been checked.

Cancellation

These rates are non-refundable, in case of cancelation or departure before end date the cancelation fee is equal to the remaining rent.

Pre-payments

The rent + costs will be invoiced monthly and needs to be paid before the start of the new period. The one-time fixed costs and deposit will be in addition of the first month's invoice.

Payment methods

We accept payments by credit card: Visa, Mastercard, American Express
By debit cards: Bancontact and Maestro
Or by bank transfers.



**YOUR HOME
AWAY FROM HOME**

Contact details

Adress

Condo Gardens Brussels
Jollystraat 141
1030 Schaarbeek

Tel: +32(0) 473 82 50 12
Mail: ba@be-housing.be

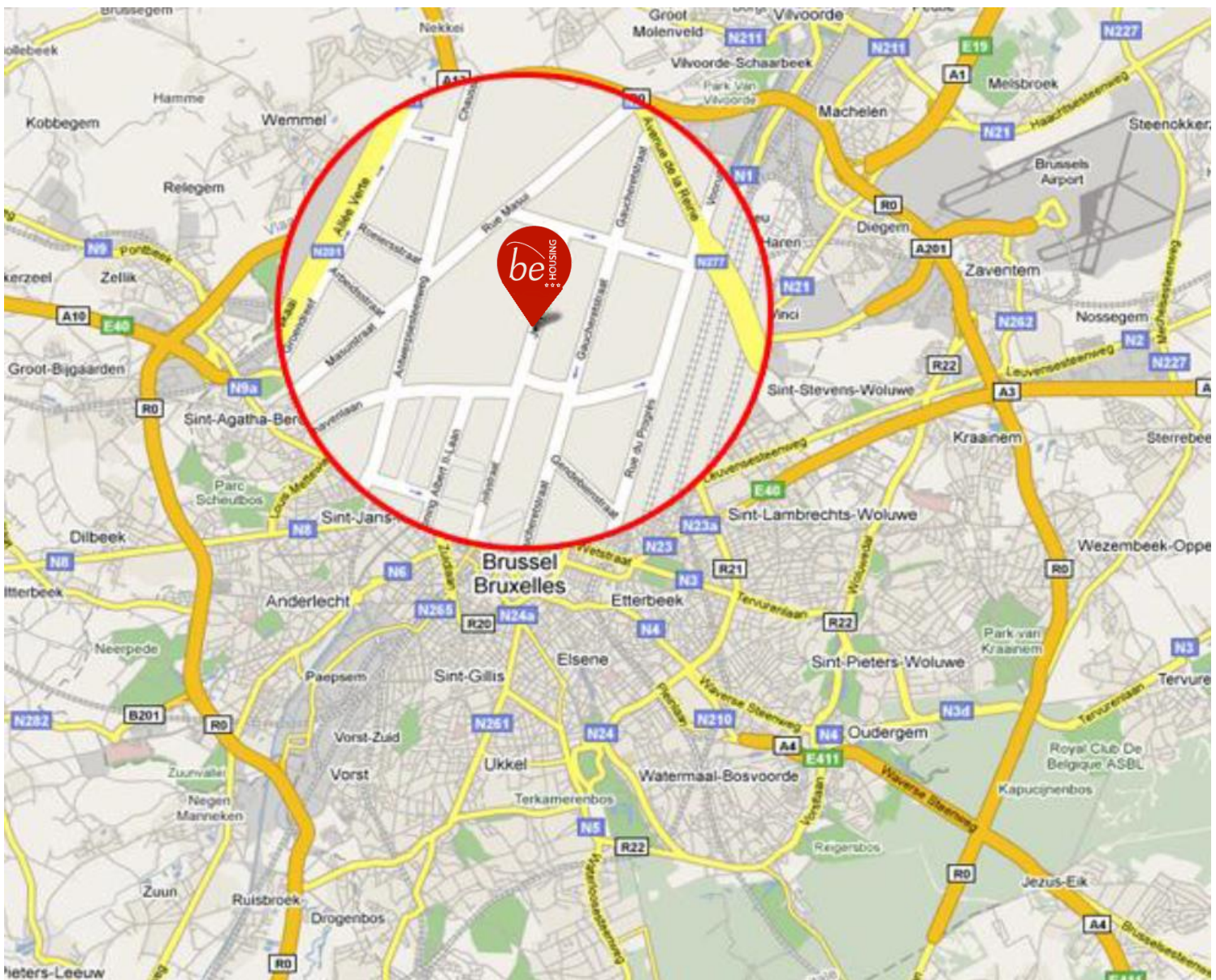
<https://www.be-housing.be/en/b/condo-gardens-brussels>

Visitations are possible after making an appointment



Reception hours

Mon	08:00 - 10:00 16:00 - 20:00
Tue	08:00 - 10:00 16:00 - 20:00
Wed	08:00 - 10:00 16:00 - 20:00
Thu	08:00 - 10:00 16:00 - 20:00
Fri	08:00 - 10:00 16:00 - 20:00
Sat	09:30 - 11:00



Directions

From the airport

Condo Gardens Brussel is about 30 minutes away from the Airport (Brussels International - Zaventem). You can take a taxi at the airport, or you can take the train towards Brussels-South. The airport train station is located below the terminal (basement level -1). Up to 4 trains an hour connect the airport with Brussels-North. Our residence is located on 500 m from the exit of the train station.

By public transport

Condo Gardens Brussels is 500 meter away from the North station. This is one of the most important stations of Brussels. When you arrive in Brussels by Eurostar or Thalys, you have to change in Brussels-South. The North-South axis is a very busy connection with trains very 5 minutes in both directions.

By car

From Ghent (E40)

Follow the motorway E40 towards Groot-Bijgaarden and follow R20. Take Leopold II-tunnel towards Ijzerplein. Turn left (Willebroekkaai). Turn right after 400 meter (Simón Bolívarlaan) and turn left at the first street (Helihavenlaan). Then turn left at the second street (Antwerpsesteenweg) and then turn right three times at the first street (Masuistraat, Destouvellesstraat, Jollystraat).

From Leuven/Liège (E40):

Follow the motorway E40 in the direction of Brussels. Take exit Meiser/Reyers and follow Meiser. Continue along Auguste Reyerslaan (R21). Turn left at Eugène Demolderlaan after about 3 kilometer. At the roundabout take the third exit (Van Ooststraat) and turn right at Paviljoenstraat. Turn left at Masuistraat. Then turn left at the first street (Destouvellesstraat). Jollystraat is the first street at the right side.

From Antwerp (A12):

Follow A12 in the direction of Brussels and continue along R21. Cross the bridge Van Praetbrug and immediately turn right at Werkhuizenkaai (N201). Turn left at Koninginnelaan after 1.5 kilometer. Turn right at the third street (Masuistraat) and then left at the first street (Destouvellesstraat). Jollystraat is the first street at the right side.



YOUR HOME
AWAY FROM HOME